

Congratulations on your purchase!

With the expedition bonnet net kit from Land Rover Passion you can get a comfortable extra space to keep your recovery rope or other equipment close at hand during your Offroad activities.



READ THE INSTRUCTIONS COMPLETELY BEFORE PROCEEDING WITH THE INSTALLATION

Give the right time to read and understand this installation guide so you can correctly install the purchased product.

The symbols used here have the following meanings:



CAUTION: Indicates an important safety notice, and failure to follow these warnings can result in serious injury or damage to equipment or vehicle.



TIPS: Indicates a tip or trick on using the product in order to make the most of its features.

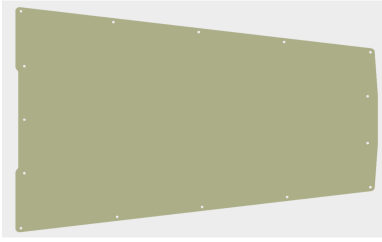

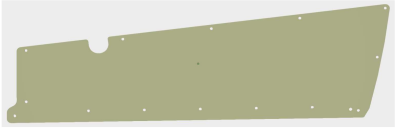



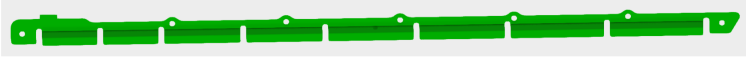


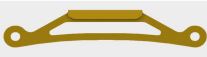
1. Compatibility

- Land Rover Discovery 3/LR3 L319
- Land Rover Discovery 4/LR4 L319
- Range Rover L322

2. Required tools

- Tape measure
- Paper tape
- Fine marker/pencil
- Punch and hammer (recommended)
- Drill bits 3, 5 and 7mm
- Rivnuts tool for M5 rivnuts
- M5 thread tool
- Allen key n. 3
- Scissors
- Lighter

3. Package contents

Description	Q.ty	Picture
CENTRAL protection plate	1	
LEFT protection plate	1	<div style="display: flex; justify-content: space-around;"> <div style="text-align: center;">  Range Rover L322 </div> <div style="text-align: center;">  Discovery/LR* L319 </div> </div>
RIGHT protection plate	1	<div style="display: flex; justify-content: space-around;"> <div style="text-align: center;">  Range Rover L322 </div> <div style="text-align: center;">  Discovery L319 </div> </div>
UPPER net frame	1	
LEFT net frame	1	
RIGHT net frame	1	
Handle	1	
Handle stop	1	
Elastic cord	1	-
M5 rivnuts	45	-
M5 Button head screws	45	-

4. Installation:

4.1. Preparation:

Clean the bonnet surface and on L322 Range Rover place the paper tape as shown or, on L319 Discovery on the sides of the bonnet hump:



Picture 1

4.2. Horizontal alignment:

Using the measure tape, locate and mark the center of the bonnet on the upper paper tape and position the central plate by matching the upper central hole with the mark just drawn:



Picture 2

4.3. Vertical alignment:

L322 Range Rover:

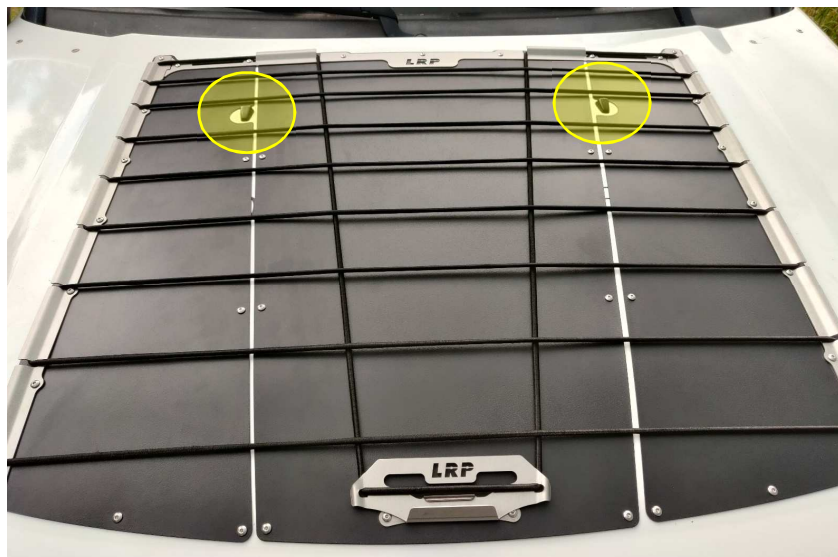
Place the center plate 35 millimeters from the top edge of the bonnet:



Picture 3

L319 Discovery/LR*:

Use the side plates as a temporary reference, positioning them so that the washer correspond to the dedicated slots and align the central plate vertically accordingly. If useful, the upper frame of the net holder can also be used as an additional temporary reference:



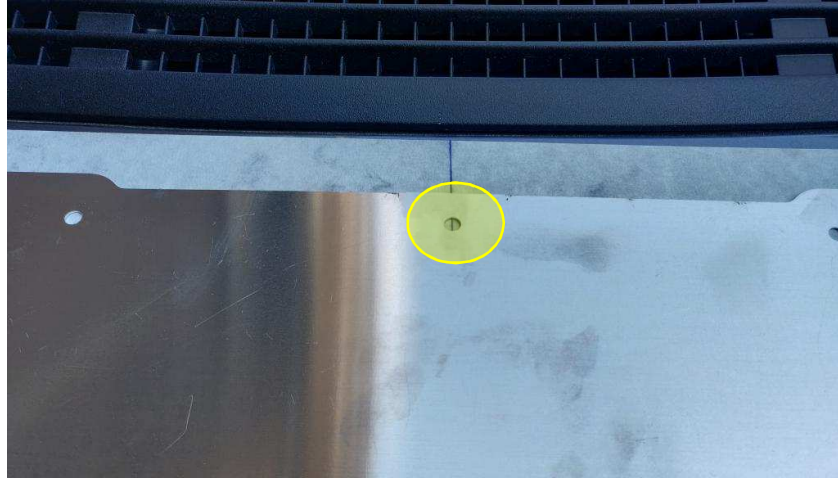
Picture 4



Before proceeding to the next step, check the correct central and vertical positioning of the plate again.

4.4. First hole, reference point

Checked that the central plate is in the correct position, with the fine marker or pencil mark the center of the upper central hole of the central protection plate on the adhesive tape.



Picture 5

Remove the central plate and drill the bonnet, with the 3mm bit first, then with the 5mm one and finally with the 7mm one.



Before drilling, check that the tip, having a hole in the bonnet, cannot damage the underlying parts!!! Be gentle and don't push with the drill, let the bit do its job, not your strength!



If you have a punch, use it to mark the sheet before making the hole. This operation will make it much more difficult to move the drill bit when the drill will star and will allow you to drill the hole with greater precision.



Picture 6

Using the rivnut tool, install the M5 rivnut in the hole, taking care not to pull it too much so as not to damage the internal thread, but enough to make a firm grip on the bonnet. If necessary, adjust the tool and / or proceed to pull it gradually.

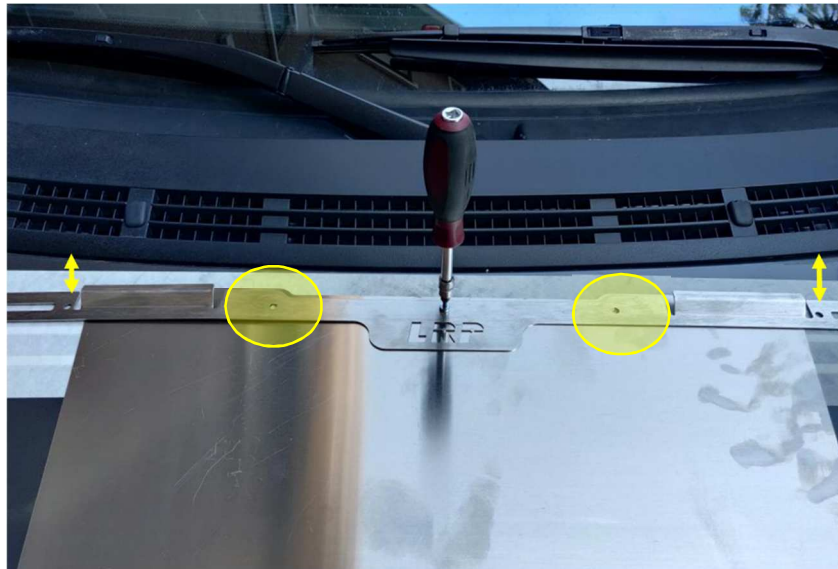


Once the rivnut has been installed, try to screw in one of the supplied screw. If the rivnut has been correctly installed, the screw will screw in without effort. Otherwise, do not insist, remove it and, using the M5 thread tool, go over the internal thread of the insert.

4.5. Longitudinal alignment

Reposition the central plate in correspondence with the rivnut installed, place the upper net frame on top it and screw them to the bonnet without tightening them strongly.

With the help of the measure tape, align the two parts longitudinally with respect to the bonnet, taking as reference two lateral dimensions between the frame/plate and the top of the hood. Checked the correct positioning, with the fine pen or the pencil, mark the two side holes of the plate / frame circled in yellow on the adhesive tape:



Picture 7

Now remove both the upper frame and the central plate, drill and insert the rivnuts following the instructions given in point 4.4 (3/5/7mm bits, rivnut installation, thread check, possible damaged thread fix).

4.6. Plates, frames and handle stop installation

The three holes made so far allow to determining the positioning of the 3 protection plates and consequently, both of the net frames and of the handle stop.

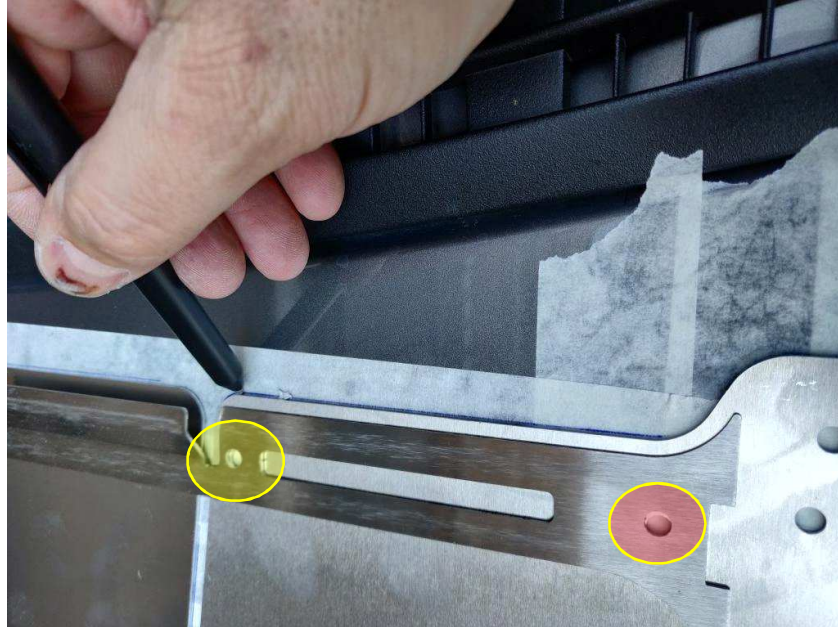
Put some adhesive paper tape on the bonnet also in correspondence with the central rows of the holes of the three protection plates. Then screw back the central plate and the upper frame without tightening too much, using all three fixing points made so far.

Insert the right and left protection plates under the upper net frame, making the holes in the frame coincide with those in the plates.

Check the positioning/spacing of the side plates with respect to the central plate along the entire length and with the fine marker pen or pencil, mark all the visible holes of the three plates on the paper tape.

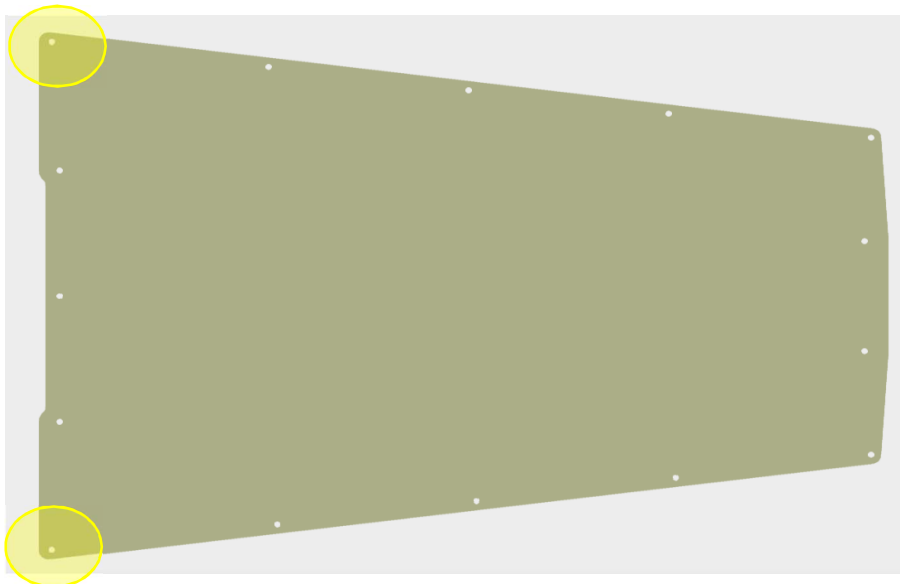


Before mark the holes, take your time to check/verify the positioning of the plates again. In case of any slight misalignment of the frame (red circle in the picture below), ALWAYS the protection plate is right and it command on the frames holes:



Picture 8

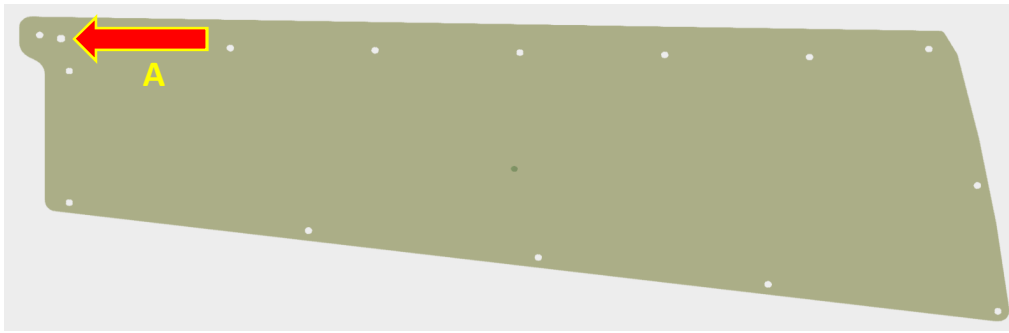
Once the positioning has been verified, remove the upper net frame and, keeping the central plate in position, mark the two holes indicated by the yellow circles:



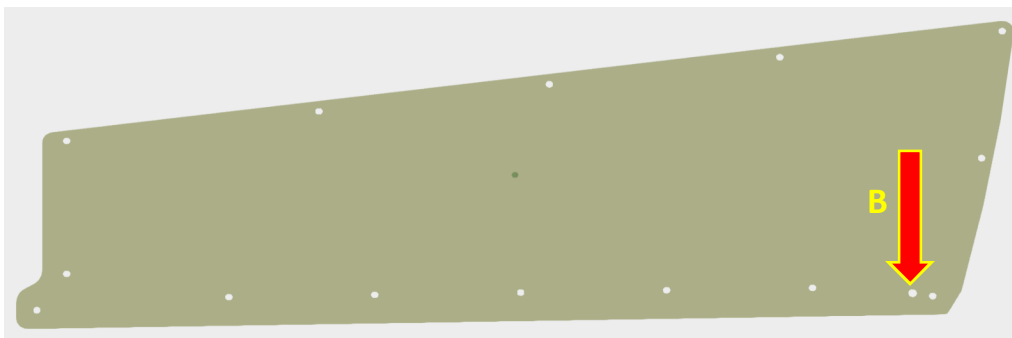
Picture 9

Now remove both all plates, drill and insert the rivnuts following the instructions given in point 4.4. (3/5/7mm bits, rivnut installation, thread check, possible damaged thread fix).

WARNING: do not insert the rivnuts into holes A and B indicated in pictures 10 and 11, they will be used later for the installation of the elastic cord!



Picture 10



Picture 11

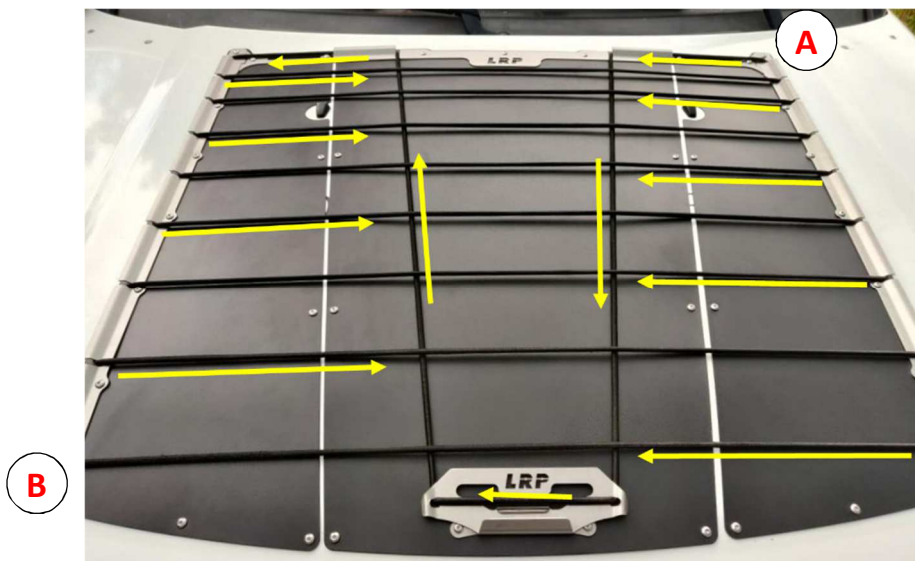
Once all the rivnuts have been installed and checked, first install the central plate by screwing the upper right and left holes indicated in picture 9.

Then place the side plates, the three net frames and the handle stop and proceed with the gradual tightening of all the screws starting from top to bottom.

4.7. Elastic cord installation

Insert one end of the elastic cord in hole A, shown in the following picture 10 and tie a knot in the part that comes out under the hood so that it cannot come out anymore.

Wrap the elastic cord around the net frames as shown in the following picture 12, passing it also through the handle. When completed, pass the remaining cord end through hole B.



Picture 12



Expedition Bonnet Net Kit with plates Installation guide

Adjust the tension of the elastic cord so that the handle stays taut on its handle stop. Once adjusted, tie a knot on the head of the cord end coming out of hole B, cut the excess cord and with the help of the lighter lightly burn the tip of the rope.

Congratulations, the installation is now complete!



This product is intended for off-road use at low speeds. Any objects under the net must be promptly removed if you are traveling on public roads or traveling at high speeds.