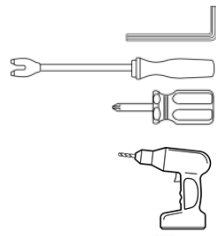


LRP001011 L322 Tree Sliders – Fitting instruction

(mirror procedure for opposite side)

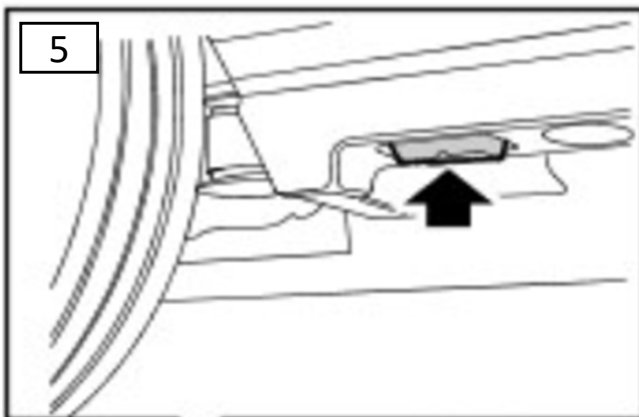
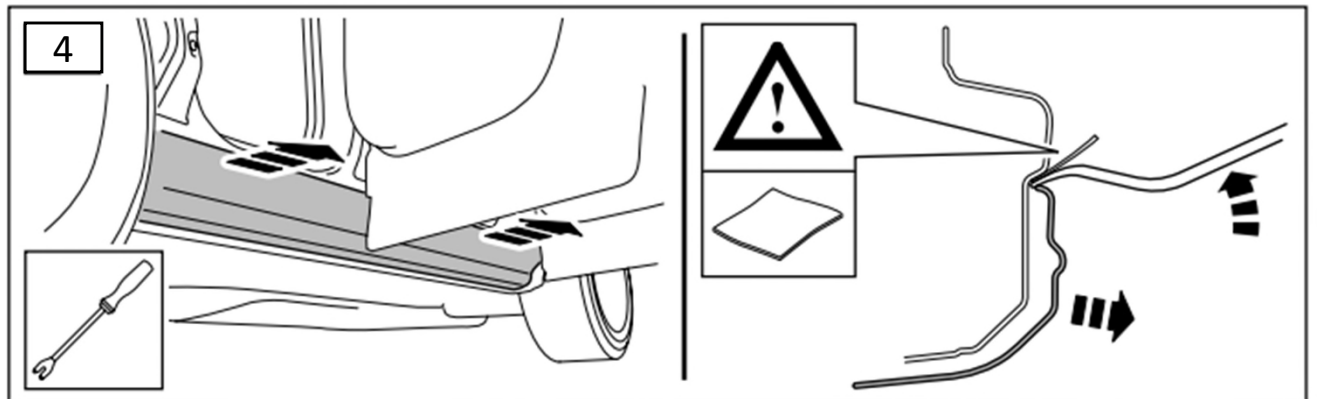
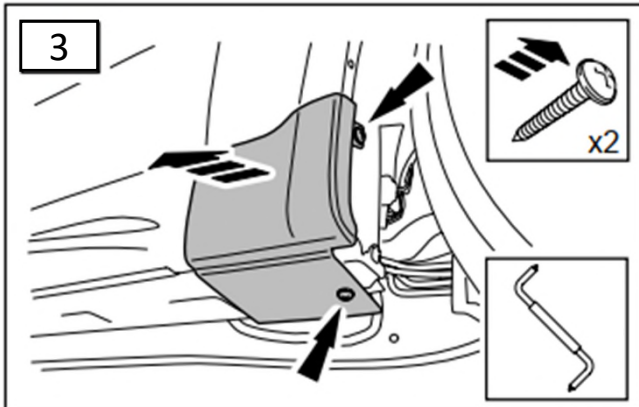
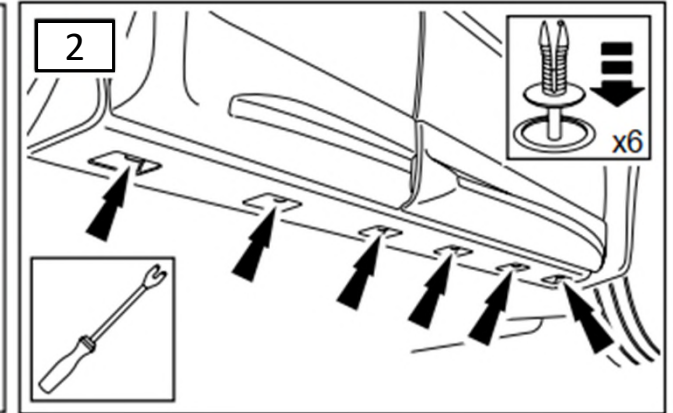
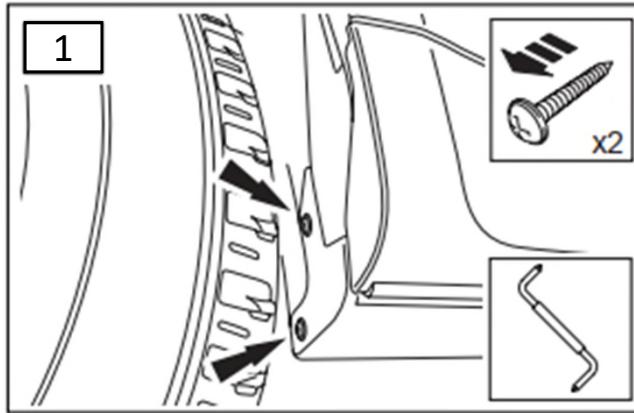
Package contents:

- Nr. 1 - Tree Slider kit
- Nr. 24 - M8 Inox bolt
- Nr. 24 - M8 Riv nuts
- Nr. 8 - M6 inox bolts
- Nr. 8 - M6 inox washers



Tools required:

- Allen wrench 5mm
- Plastic trim removal tool
- Phillips screwdriver
- Rivnut tool
- Drill + 10,5mm bit



5. Using the plastic trim removal, remove both Pad - Jacking Location
6. Using 10,5mm bit, enlarge 12 existing holes (6 on the side, 6 below, corresponding to the holes in the tree slider)
7. Using Rivnut tool, install the provided M8 rinuts
8. Install the tree sliders with the M8 screws where the rivets are placed and the M6 screws/washers where indicated in the figure below. Tighten each screw progressively by hand

